



Monoi

the essence of personal care

White is the colour of emulsions. Essential,

nutritive, original, White crystallises

the essence of personal care.

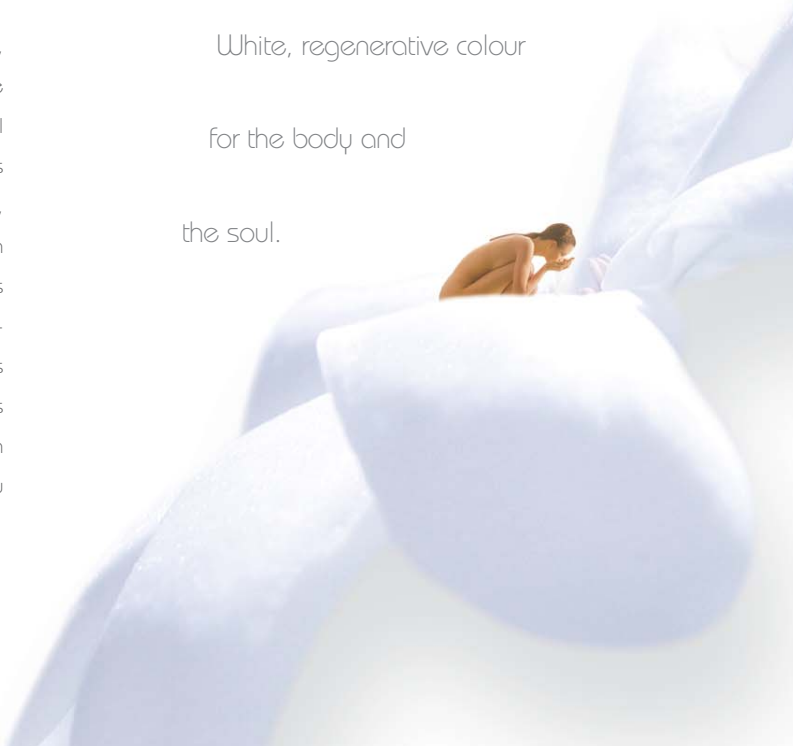
White, regenerative colour

for the body and

the soul.

In the Pacific Islands, the art of personal care has a name: Monoi - and a symbol: the Tiare flower.

Created with the help of Tane, the God of Beauty, the Tiare flower is the most beautiful flower of French Polynesia. Its petals have a rich, unctuous, iridescent texture which announces a rare and precious potential for cosmetic application. Prepared with fresh buds of the flower, Monoi belongs to a thousand year old tradition combining pharmacology, beauty and spirituality.



Ukia

Baby care

Monoï de Tahiti based on Tiare flowers, sometimes enriched with sandalwood, has been prepared for more than two thousand years to massage and anoint new born children; it is used to nourish their fragile epidermis and protect them against the sun and the winds.

Its maternal use starts with prenatal massages. Monoï thus expresses, in a marvellous way, all the essence of "white": the colour of active products to protect and stimulate the skin - the colour of a fundamental gesture that feels like an essential caress to the new-born soul.

Sample formula: original baby care baby bath cream

The **baby bath cream** allows a very smooth and supple massage of the baby skin while providing a gentle soap-free cleansing action. It has been designed to respect the delicate epidermis of babies as well as the sensitive skin of adults.

It **relies on the soothing properties** of the Tiare flower, rich in phenolic compounds and methyl salicylate.

At the heart of the formula: Monoï de Tahiti AO, enriched with moisturizing and soothing Tiare flower milk, cotton ecophylane and an emollient and purifying extract of sandalwood.

Original baby care

Baby bath cream

Phase A:	/100.0 g
Water	qsp 100.0
Aqua/water	
Glycerin	5.0
Glycerin	
Titriplex III	0.02
Disodium EDTA	

Phase B:	/100.0 g
Arlatone DUO	17.0
Disodium lauryl sulphosuccinate – sodium cocoyl isethionate – zea mays – cetearyl alcohol – aqua – hydrogenated castor oil & glycerin – titanium dioxide	

Phase C:	/100.0 g
Monoi de Tahiti	5.0
Cocos nucifera-Gardenia tahitensis	
Sepigel 305	3.0
Polyacrylamide & C13-14 isoparaffin & laureth-7	
Alpha-tocopherol acetate	0.5
Tocopheryl acetate	

Phase D:	/100.0 g
Proteol OAT	20.0
Sodium lauroyl oat amino acids	
Oramix NS 10	6.0
Decyl glucoside	
Tegobetaine F 50	5.0
Cocamidopropyl betaine	

Phase E:	/100.0 g
Sepicide HB	0.7
Phenoxyethanol (and) methylparaben (and) ethylparaben (and) propylparaben (and) butylparaben	
Tiare flower milk	1.0
Water (and) cocos nucifera (coconut oil) (and) gardenia tahitensis flower (and) gardenia tahitensis flower extract (and) xanthan gum	
Cotton flower ecophylane	0.5
Maltodextrine (and) gossypium herbaceum (cotton extract)	
Sandalwood extract	0.2
Aqua / glycerin / santalum austrocaledonicum / nipostat sodium	
Biorelaxing fragrance	0.2
Fragrance	

Operating mode:

Weigh the constituents of phase A, mix them and heat the mix to 80°C. Pour in the arlatone DUO while stirring. The phase thus obtained must be homogenised. Cool to 50°C. Prepare phase C in a separate tank. Pour A + B in phase C while stirring. When the mix is well homogenised, add phase D, while gently stirring or under vacuum. Add phase E at 25°C. Stir and homogenise.

Measure the pH; it must be at about 5.5/6.5 – otherwise adjust the pH with a solution of citric acid or a sodium hydroxide solution.

Inatéa

Hair care

A cult product, Monoi is used by the women in Polynesia as a reparative ointment on their long and beautiful hair. With an often rich and luscious fragrance, shining with golden reflections, Monoi de Tahiti seems vested with the same mysterious and seductive power attributed to hair in many cultures throughout the world.

Prepared with fresh buds of Tiare flowers, Monoi is an essential hair care product used against the drying effects of the sun, the winds and sea salt. Its reparative properties on the hair fiber have been validated by a series of tests initiated by the Monoi Institute.

Sample formula: nourishing and embellishing sap hair conditioner

The nourishing and embellishing sap has been formulated to nourish and repair dry and fragile hair.

At the heart of the formula: Monoi de Tahiti is associated with a cocktail of actives: a guava pulp rich in vitamins, a moisturizing and restructuring extract of Sebala Serulata, a purifying essential oil of sandalwood, and remineralising extract of gypsophila.

Nourishing and embellishing sap Hair conditioner

Phase A:	/100.0 g
Emulgade 1000 NI	4.0
Cetearyl alcohol & ceteareth 20	
Monoi de Tahiti	5.0
Cocos nucifera-Gardenia tahitensis	
Alpha-tocopherol acetate	0.5
Tocopheryl acetate	

Phase B:	/100.0 g
Dehyquart A	2.0
Cetrimonium chloride	
Glycerin	2.0
Glycerin	
Water	qsp 100.0
Aqua/water	

Phase C:	/100.0 g
Salcare super 7	0.2
Polyquaternium 7	
Sepicide HB	0.7
Phenoxyethanol (and) methylparaben (and) ethylparaben (and) propylparaben (and) butylparaben	
Guava pulp	1.0
Psidium guajava extract	
Sebala serulata extract	2.0
Serenoa serulata extract	
Gypsophila extract	0.7
Propylene glycol (and) water (and) Gypsophila paniculata root extract	
Sandal wood essential oil	0.5
Santalum austrocaledonicum	

Operating mode:

Weigh phase A and phase B, heat the two phases to 75°C, pour phase B into phase A, emulsify under vacuum for 15 minutes. Cool to 40°C and pour in phase C. Keep cooling and add the essential oil at 25°C. Stir to homogenize.

Measure the pH: it must be at 4.0 ± 0.2

Hinanui

Skin care

Hinanui: a universe of elegant and modern formulas designed to create precious moments of enlightening personal care - moments made for the skin to taste the unctuous and melting textures of essential products. The skin is moisturized and finds the energetic resources necessary for its vitality.

Sample formula: Tiare velvet fluid day cream

Tiare velvet fluid has been specially designed for its moisturizing and revitalizing properties. The product has a light fluid texture that easily penetrates the skin. It leaves a delicate velvet feel to the skin.

At the heart of the formula: Monoi - fresh buds of Tiare flowers combined with a light and silky oil extracted from the almond of the Polynesian Coconut tree.

It is **associated** with a soothing and astringent extract of Moroccan rose and to a stimulating extract of green tea. Magnesium and an extract of white pearl rich in calcium aim at providing skin cells with the energy they need for an optimal metabolism. Pearlescent micro pigments reflect light and illuminate the complexion.

Tiare velvet fluid Day cream

Phase A:	/100.0 g
Simulsol 165	5.0
PEG 100 stearate & glyceryl stearate	
Manoi de Tahiti	5.0
Cocos nucifera-Gardenia tahitensis	
Stearic acid	1.0
Stearic acid	
Abil wax 2434	3.0
Stearoxy dimethicone	
Alpha-tocopherol acetate	0.5
Tocopheryl acetate	
Titanium dioxide	0.2
Titanium dioxide	
Timiron silk gold	0.3
Mica & titanium dioxide	
Arlamol HD	2.0
Isohexadecane	
Liponate NPGC-2	2.0
Neopentyl glycol dicaprylate/dicaprate	
Phase B:	/100.0 g
Water	qsp 100.0
Aqua/water	
Ultrez 10	0.1
Carbomer	

Phase C:	/100.0 g
DC 245	3.0
Cyclomethicone	
Sepicide HB	0.7
Phenoxyethanol (and) methylparaben (and) ethylparaben (and) propylparaben (and) butylparaben	
Green tea extract	0.1
Camelia sinensis extract	
Extrait HG de rose pâle du Maroc	0.2
Rosa centifolia extract	
Hydrolyzed pearl	0.1
Hydrolyzed pearl	
Magnesium gluconate	0.01
Magnesium gluconate	
Deymidine fragrance	0.2
Fragrance	

Operating mode:

Weigh phase A and B, heat these phases to 75°C, pour phase B into phase A. Emulsify under vacuum for 15 minutes. Cool to 40°C and pour in phase C. Keep cooling to room temperature. Measure the pH: it must be at 5.5/6.5 or adjust with a citric acid solution or a sodium hydroxide solution.



The richness of a product can be measured by the variety of its applications, the constant renewal of its modernity. Monoï de Tahiti is one of these timeless products which keep surprising us by their inspirational potential.

To be closer to you in your creative phases, to allow you to develop new products faster and to share our inspirations, the Monoï Institute develops concepts and Haute Couture formulas in a series of original Cosmetic Inspirational Guides.

Each series explores a specific dimension in personal care and suggests products which showcase the many aspects of Monoï de Tahiti.

Welcome to the world of Monoï de Tahiti.